

Joy Spring

As played by George Morrow

Clifford Brown

QUARTER=172

Handwritten musical score for 'Joy Spring' in bass clef. The score consists of seven staves of music with corresponding chord symbols written above them. Measure numbers 7, 13, 19, 25, and 31 are indicated at the start of their respective staves. The key signature has one flat (Bb).

Chord symbols: FMA7, GMIN7 C7, FMA7, BbMIN7 Eb7, AMIN7 D7(#9), GMIN7 C7, FMA7, AbMIN7 Db7, GbMA7, AbMIN7 Db7, GbMA7, BMIN7 E7, BbMIN7 Eb7(#9), AbMIN7 Db7, GbMA7, AMIN7 D7, GMA7, GMIN7 C7, FMA7, FMIN7 Bb7, EbMA7, AbMIN7 Db7, GbMA7, GMIN7 C7, FMA7, GMIN7 C7, FMA7, BbMIN7 Eb7, AMIN7 D7(#9), GMIN7 C7, FMA7, GMIN7 C7, FMA7.

12 Keys of Bebop Scales

QUARTER=160

Handwritten musical score for '12 Keys of Bebop Scales' in bass clef. The score consists of two staves of music. Measure numbers 34 and 35 are indicated at the start of their respective staves. The key signature has one flat (Bb).

Chord symbols: Bb7, Eb7.

2

A^b7

36

D^b7

37

G^b7

38

B7

39

E7

40

A7

41

D7

42

G7

43

C7

44

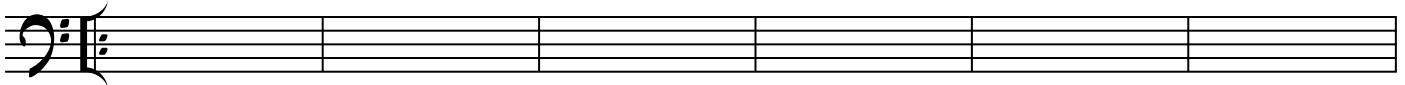
F7

45

Write a bass line over Rhythm Changes

PYJO | BASS AUDITION

B^b MAS7 GMIN7 CMIN7 F7 DMIN7 G7 CMIN7 F7 FMIN7 B^b 7 E^b 7 E^o 7 ³



46

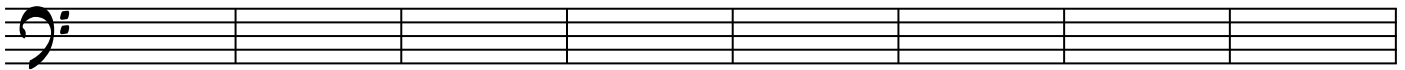
DMIN7 G7 CMIN7 F7 B^b MAS7 F7 B^b MAS7



END ENDING

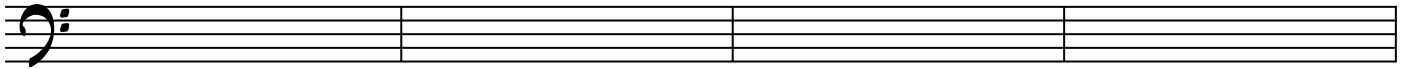
52

A MIN7 D7 DMIN7 G7 GMIN7 C7 CMIN7 F7



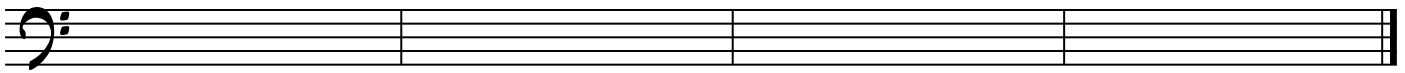
56

B^b MAS7 B M7(b 5) CMIN7 F7 DMIN7 D^b 7 CMIN7 F7



64

B^b MAS7 E^b 7 B^b MAS7 CMIN7 F7



68