

Oleo

As played by Paul Chambers

Miles Davis

HALF=120

Chord symbols for the first part of 'Oleo':

1st line: Bb Maj7, C min7, F7, Bb Maj7, G min7, C min7, F7, Bb 7, Eb 7

2nd line: D min7, G7, C min7, F7, Bb 7, C min7, F7, D7, G7, C min7, F7

3rd line: Bb 7, Eb 7, E° 7, F7, Bb Maj7, A min7, D7

4th line: G7, C 7, C 7

5th line: Bb Maj7, C min7, Bb 7, Bb Maj7, Eb 7, E° 7, F7, Bb Maj7

Measures 1, 7, 13, 19, and 25 are indicated at the start of their respective lines.

12 Keys of Bebop Scales

QUARTER=120

Chord symbols for the 12 Keys of Bebop Scales:

33: Bb 7

34: Eb 7

35: A^b 7

Measures 33, 34, and 35 are indicated at the start of their respective lines.

b_7

36 G^b_7

37 B_7

38 E_7

39 A_7

40 D_7

41 G_7

42 C_7

43 F_7

44

Write a bass line over Bb Blues Next page

Quarter=120

Write a bass line over Bb Blues

PYJO IIA BASS AUDITION

Bb7

Eb7

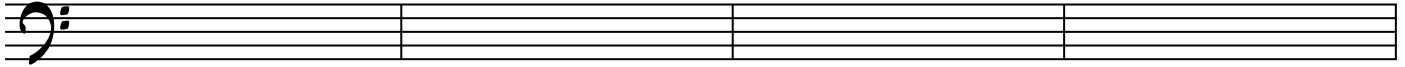
E°7

Bb7

FMIN7

Bb7

3



45

Eb7

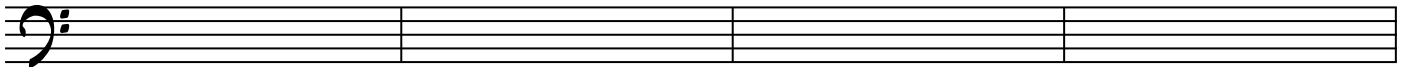
E°7

Bb7

C MIN7

D MIN7

Db7



49

C MIN7

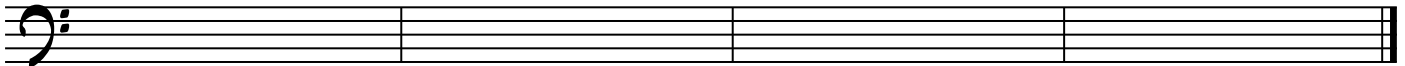
F7

D MIN7

G7

C MIN7

F7



53

